



235 x 200 mm



1.4 kg



Steel / HDG

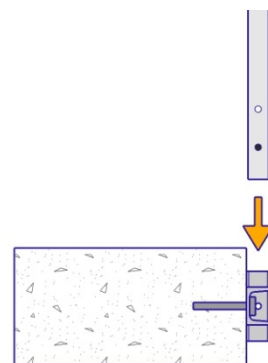
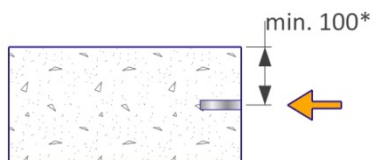
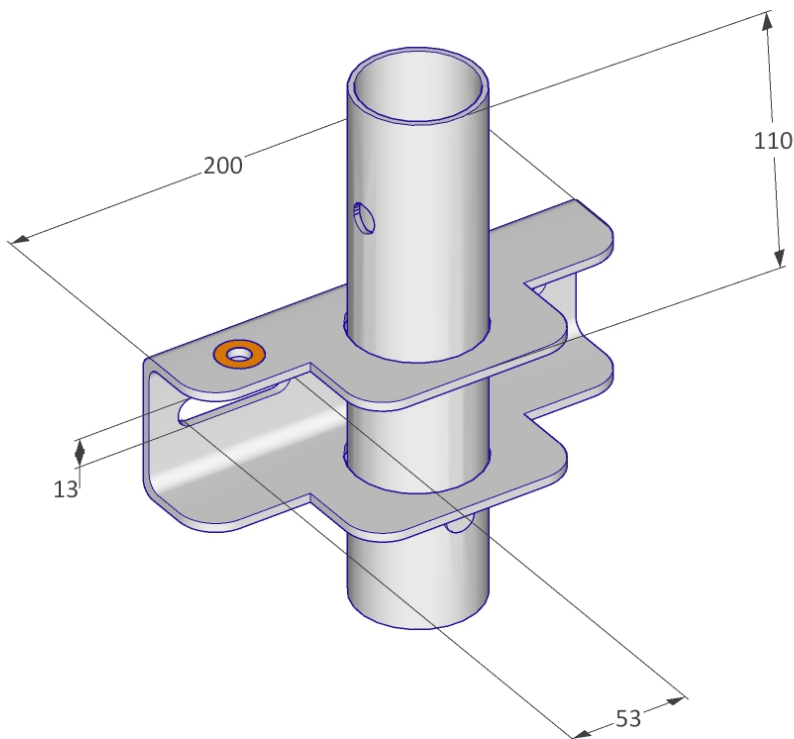


BS EN 13374, class A

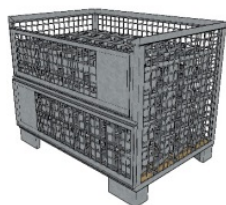
Description

The VT Balcony can be connected to any vertical surface including masonry. The two attachment points prevent this attachment from deflecting in any direction. The distance between the fasteners is min. 80 mm and maximum 160 mm.

A distinct tether point marked with orange labeling indicates where a user should connect a carabiner or similar.



*may differ, please see charts of the respective screw manufacturer



250 pcs / Eurobox



1240 x 835 x 970 mm



423 kg

Means of Fixation

Tensile load of the screws min. 10 kN
→ Hilti HUS3-H10 L-130mm or the like / better, assembly torque limit min. 60 Nm

General Safety

Health and Safety Regulations should be followed at all times.

For more information:

→ viva-tec.co.uk/safety

mm